

Anti-FAM84A antibody

Cat. No.	ml163880
Package	25 µl/100 µl/200 µl
Storage	-20°C, pH7.4 PBS, 0.05% NaN ₃ , 40% Glycerol

Product overview

Description	Anti-FAM84A rabbit polyclonal antibody
Applications	ELISA, IHC
Immunogen	Synthetic peptide of human FAM84A
Reactivity	Human, Mouse
Content	0.72 mg/ml
Host species	Rabbit
Ig class	Immunogen-specific rabbit IgG
Purification	Antigen affinity purification

Target information

Symbol	FAM84A
Full name	family with sequence similarity 84 member A
Synonyms	NSE1; PP11517
Swissprot	Q96KN4

Target Background

FAM84A (family with sequence similarity 84, member A), also known as NSE1 (neurologic sensory protein 1), is a 292 amino acid protein that belongs to the FAM84 family of proteins. Predominantly expressed in testis, FAM84A shares 44% amino acid identity with the related protein FAM84B. FAM84A localizes to a subcellular membrane region where there is no contact between neighboring cells and is believed to play a role in cell morphology and motility. More specifically, the expression of FAM84A increases cell motility. Two FAM84A isoforms are expressed due to alternative splicing events. Isoform 2 can be phosphorylated on various serine residues and this phosphorylation is associated with cellular morphology. FAM84A is upregulated in colorectal cancer, lung cancer, pancreatic cancer, cholangiocarcinoma and bladder cancer tissues. Via its ability to increase cell motility, FAM84A may contribute to the invasion and metastasis of cancer cells.

订购热线: 4008-898-798

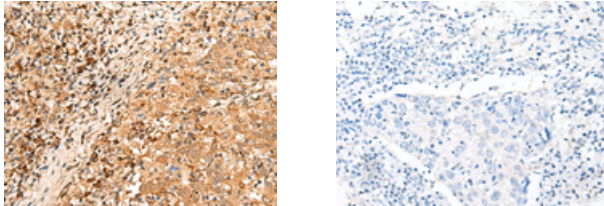
Applications

Immunohistochemistry

Predicted cell location: Nucleus

Positive control: Human cervical cancer

Recommended dilution: 30-150



The image on the left is immunohistochemistry of paraffin-embedded Human cervical cancer tissue using ml163880(FAM84A Antibody) at dilution 1/25, on the right is treated with synthetic peptide. (Original magnification: $\times 200$)

ELISA

Recommended dilution: 5000-10000

联系电话: 4008-898-798, 021-61725725

联系QQ: 2881505695, 2881505696

邮箱: mlbio_cn@yeah.net

网址: www.mlbio.cn