

Anti-GFRA4 antibody

Cat. No.	ml262757
Package	25 µl/100 µl/200 µl
Storage	-20°C, pH7.4 PBS, 0.05% NaN ₃ , 40% Glycerol

Product overview

Description	Anti-GFRA4 rabbit polyclonal antibody
Applications	ELISA, IHC
Immunogen	Synthetic peptide of human GFRA4
Reactivity	Human
Content	0.4 mg/ml
Host species	Rabbit
Ig class	Immunogen-specific rabbit IgG
Purification	Antigen affinity purification

Target information

Symbol	GFRA4
Full name	GDNF family receptor alpha 4
Synonyms	
Swissprot	Q9GZZ7

Target Background

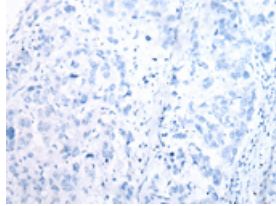
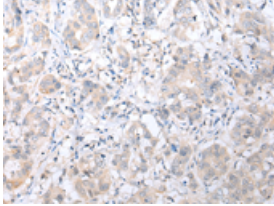
The protein encoded by this gene is a member of the GDNF receptor family. It is a glycosylphosphatidylinositol(GPI)-linked cell surface receptor for persephin, and mediates activation of the RET tyrosine kinase receptor. This gene is a candidate gene for RET-associated diseases. Alternatively spliced transcript variants encoding different isoforms have been described for this gene.

订购热线: 4008-898-798

Applications

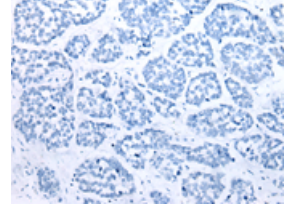
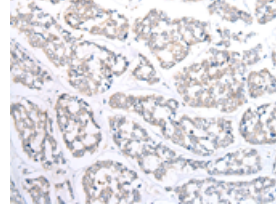
Immunohistochemistry

Predicted cell location: Secreted or Cell membrane
Positive control: Human breast cancer
Recommended dilution: 10-50



The image on the left is immunohistochemistry of paraffin-embedded Human breast cancer tissue using ml262757(GFRA4 Antibody) at dilution 1/20, on the right is treated with synthetic peptide. (Original magnification: $\times 200$)

Predicted cell location: Secreted or Cell membrane
Positive control: Human esophagus cancer
Recommended dilution: 10-50



The image on the left is immunohistochemistry of paraffin-embedded Human esophagus cancer tissue using ml262757(GFRA4 Antibody) at dilution 1/20, on the right is treated with synthetic peptide. (Original magnification: $\times 200$)

ELISA

Recommended dilution: 1000-2000

联系电话: 4008-898-798, 021-61725725

联系QQ: 2881505695, 2881505696

邮箱: mlbio_cn@yeah.net

网址: www.mlbio.cn