

Anti-SYT5 antibody

Cat. No.	ml121273
Package	25 µl/100 µl/200 µl
Storage	-20°C, pH7.4 PBS, 0.05% NaN ₃ , 40% Glycerol

Product overview

Description	Anti-SYT5 rabbit polyclonal antibody
Applications	ELISA, WB, IHC
Immunogen	Fusion protein of human SYT5
Reactivity	Human, Mouse, Rat
Content	0.1 mg/ml
Host species	Rabbit
Ig class	Immunogen-specific rabbit IgG
Purification	Antigen affinity purification

Target information

Symbol	SYT5
Full name	Synaptotagmin V
Synonyms	
Swissprot	O00445

Target Background

Synaptotagmins, such as SYT5, are a family of type III membrane proteins characterized by cytoplasmic repeats related to protein kinase C regulatory (C2) domains, which are thought to bind calcium. Synaptotagmins may act both as negative regulators of vesicle fusion, allowing fusion in the presence of calcium, and as calcium receptors or sensor molecules. May be involved in Ca²⁺-dependent exocytosis of secretory vesicles through Ca²⁺ and phospholipid binding to the C2 domain or may serve as Ca²⁺ sensors in the process of vesicular trafficking and exocytosis. Regulates the Ca²⁺-dependent secretion of norepinephrine in PC12 cells. Required for export from the endocytic recycling compartment to the cell surface.

订购热线: 4008-898-798

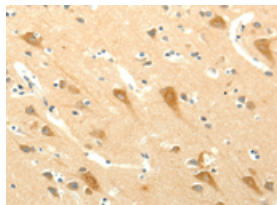
Applications

Immunohistochemistry

Predicted cell location: Cytoplasm

Positive control: Human brain

Recommended dilution: 15-50

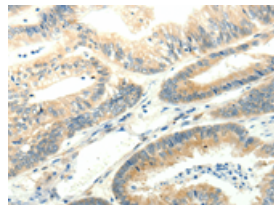


The image on the left is immunohistochemistry of paraffin-embedded Human brain tissue using ml121273(SYT5 Antibody) at dilution 1/15, on the right is treated with fusion protein. (Original magnification: $\times 200$)

Predicted cell location: Cytoplasm

Positive control: Human colon cancer

Recommended dilution: 15-50



The image on the left is immunohistochemistry of paraffin-embedded Human colon cancer tissue using ml121273(SYT5 Antibody) at dilution 1/15, on the right is treated with fusion protein. (Original magnification: $\times 200$)

Western blotting

Predicted band size: 43 kDa

Positive control: Human thigh malignant fibrous histiocytoma tissue

Recommended dilution: 200-1000

Gel: 10% SDS-PAGE

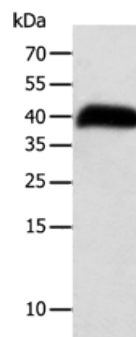
Lysate: 40 μ g

Lane: Human thigh malignant fibrous histiocytoma tissue

Primary antibody: ml121273(SYT5 Antibody) at dilution 1/100

Secondary antibody: Goat anti rabbit IgG at 1/8000 dilution

Exposure time: 8 hours



ELISA

Recommended dilution: 1000-2000

联系电话: 4008-898-798, 021-61725725

联系QQ: 2881505695, 2881505696

邮箱: mlbio_cn@yeah.net

网址: www.mlbio.cn