

Anti-MRPL39 antibody

Cat. No.	ml122701
Package	25 µl/100 µl/200 µl
Storage	-20°C, pH7.4 PBS, 0.05% NaN ₃ , 40% Glycerol

Product overview

Description	Anti-MRPL39 rabbit polyclonal antibody
Applications	ELISA, WB, IHC
Immunogen	Fusion protein of human MRPL39
Reactivity	Human, Mouse
Content	0.5 mg/ml
Host species	Rabbit
Ig class	Immunogen-specific rabbit IgG
Purification	Antigen affinity purification

Target information

Symbol	MRPL39
Full name	mitochondrial ribosomal protein L39
Synonyms	L39mt; MRPL5; RPML5; MRP-L5; PRED22; PRED66; MSTP003; C21orf92
Swissprot	Q9NYK5

Target Background

Mammalian mitochondrial ribosomal proteins are encoded by nuclear genes and help in protein synthesis within the mitochondrion. Mitochondrial ribosomes (mitoribosomes) consist of a small 28S subunit and a large 39S subunit. They have an estimated 75% protein to rRNA composition compared to prokaryotic ribosomes, where this ratio is reversed. Another difference between mammalian mitoribosomes and prokaryotic ribosomes is that the latter contain a 5S rRNA.

订购热线: 4008-898-798

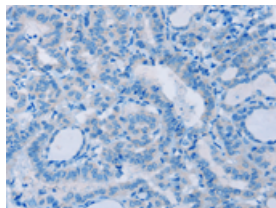
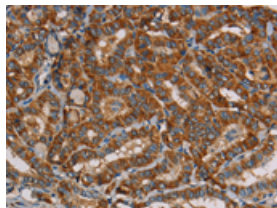
Applications

Immunohistochemistry

Predicted cell location: Cytoplasm

Positive control: Human thyroid cancer

Recommended dilution: 50-200

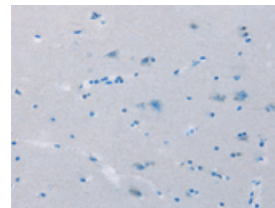
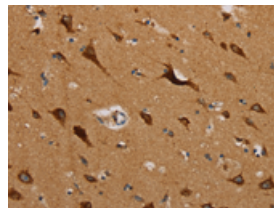


The image on the left is immunohistochemistry of paraffin-embedded Human thyroid cancer tissue using ml122701(MRPL39 Antibody) at dilution 1/45, on the right is treated with fusion protein. (Original magnification: $\times 200$)

Predicted cell location: Cytoplasm

Positive control: Human brain

Recommended dilution: 50-200



The image on the left is immunohistochemistry of paraffin-embedded Human brain tissue using ml122701(MRPL39 Antibody) at dilution 1/45, on the right is treated with fusion protein. (Original magnification: $\times 200$)

Western blotting

Predicted band size: 39 kDa

Positive control: 293T, K562, 231 and hela cells

Recommended dilution: 1000-5000

Gel: 8%SDS-PAGE

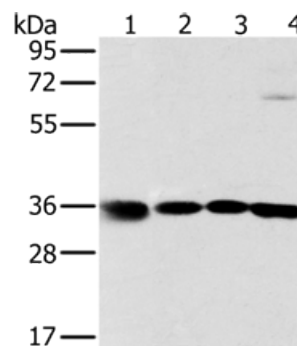
Lysate: 40 μ g

Lane 1-4: 293T cells, K562 cells, 231 cells, hela cells

Primary antibody: ml122701(MRPL39 Antibody) at dilution 1/600

Secondary antibody: Goat anti rabbit IgG at 1/8000 dilution

Exposure time: 2 seconds



ELISA

Recommended dilution: 2000-10000

联系电话: 4008-898-798, 021-61725725

联系QQ: 2881505695, 2881505696

邮箱: mlbio_cn@yeah.net

网址: www.mlbio.cn