

## Anti-YRDC antibody

<b>Cat. No.</b>	ml162657
<b>Package</b>	25 µl/100 µl/200 µl
<b>Storage</b>	-20°C, pH7.4 PBS, 0.05% NaN <sub>3</sub> , 40% Glycerol

### Product overview

<b>Description</b>	Anti-YRDC rabbit polyclonal antibody
<b>Applications</b>	ELISA, WB, IHC
<b>Immunogen</b>	Synthetic peptide of human YRDC
<b>Reactivity</b>	Human, Mouse, Rat
<b>Content</b>	0.5 mg/ml
<b>Host species</b>	Rabbit
<b>Ig class</b>	Immunogen-specific rabbit IgG
<b>Purification</b>	Antigen affinity purification

### Target information

<b>Symbol</b>	YRDC
<b>Full name</b>	yrDC N(6)-threonylcarbamoyltransferase domain containing
<b>Synonyms</b>	IRIP; SUA5; DRIP3
<b>Swissprot</b>	Q86U90

### Target Background

YrdC (yrDC domain containing protein), also known as IRIP (ischemia/reperfusion-inducible protein homolog), SUA5 or DRIP3 (dopamine receptor-interacting protein 3), is a 279 amino acid ubiquitously expressed protein found at highest levels in brain, liver and pancreas. A member of the SUA5 family, yrdC is involved in certain aspects of transporter activity, such as the regulation of efflux transporter activity and cargo assembly. YrdC is a peripheral membrane protein that contains one yrdC-like domain, interacts with RSC1A1 and localizes to mitochondrial and plasma membranes.

订购热线: 4008-898-798

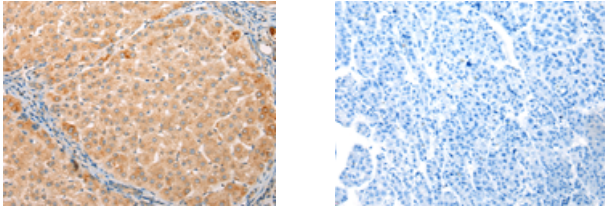
### Applications

#### Immunohistochemistry

Predicted cell location: Cell membrane

Positive control: Human liver cancer

Recommended dilution: 25-100



The image on the left is immunohistochemistry of paraffin-embedded Human liver cancer tissue using ml162657(YRDC Antibody) at dilution 1/20, on the right is treated with synthetic peptide. (Original magnification:  $\times 200$ )

#### Western blotting

Predicted band size: 29 kDa

Positive control: Mouse stomach tissue

Recommended dilution: 500-2000

Gel: 12% SDS-PAGE

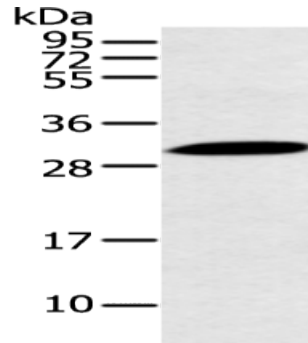
Lysate: 40  $\mu$ g

Lane: Mouse stomach tissue

Primary antibody: ml162657(YRDC Antibody) at dilution 1/250

Secondary antibody: Goat anti rabbit IgG at 1/8000 dilution

Exposure time: 20 seconds



#### ELISA

Recommended dilution: 2000-5000

联系电话: 4008-898-798, 021-61725725

联系QQ: 2881505695, 2881505696

邮箱: mlbio\_cn@yeah.net

网址: www.mlbio.cn