

Anti-BCAS4 antibody

Cat. No.	ml261480
Package	25 µl/100 µl/200 µl
Storage	-20°C, pH7.4 PBS, 0.05% NaN ₃ , 40% Glycerol

Product overview

Description	Anti-BCAS4 rabbit polyclonal antibody
Applications	ELISA, WB, IHC
Immunogen	Synthetic peptide of human BCAS4
Reactivity	Human
Content	0.6 mg/ml
Host species	Rabbit
Ig class	Immunogen-specific rabbit IgG
Purification	Antigen affinity purification

Target information

Symbol	BCAS4
Full name	breast carcinoma amplified sequence 4

Synonyms	CNOL
Swissprot	Q8TDM0

Target Background

The gene encoding BCAS4 (Breast carcinoma-amplified sequence 4), a 211 amino acid protein, is found in a region on chromosome 20 that is frequently amplified in human breast cancer. This 20q13 locus amplification is found in 12%–39% of primary breast tumors, which correlates with a 17q23 locus amplification that is found in 20% of primary breast tumors. The amplification and translocation between the BCAS4 gene and the BCAS3 gene, with a 17q23 locus, results in a fusion transcript that is overexpressed in MCF-7 cells. Also, deletion of chromosomal region 20q13.13-q13.2 and resultant deletion of BCAS4, as well as three other genes, is the cause of Okihiro syndrome, a disease characterized by ocular and upper limb anomalies. BCAS4 is normally expressed in thymus, kidney, spleen, placenta and brain. There are three isoforms of BCAS4 which are produced as a result of alternative splicing events.

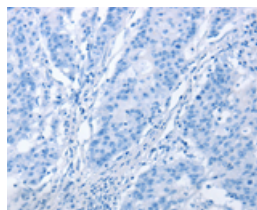
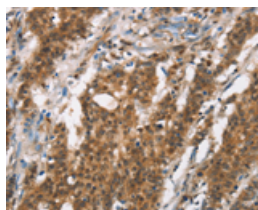
Applications

Immunohistochemistry

Predicted cell location: Cytoplasm

Positive control: Human gastic cancer

Recommended dilution: 50-200

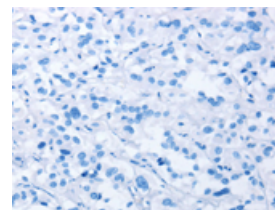
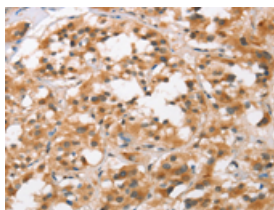


The image on the left is immunohistochemistry of paraffin-embedded Human gastic cancer tissue using ml261480(BCAS4 Antibody) at dilution 1/50, on the right is treated with synthetic peptide. (Original magnification: ×200)

Predicted cell location: Cytoplasm

Positive control: Human thyroid cancer

Recommended dilution: 50-200



The image on the left is immunohistochemistry of paraffin-embedded Human thyroid cancer tissue using ml261480(BCAS4 Antibody) at dilution 1/50, on the right is treated with synthetic peptide. (Original magnification: ×200)

Western blotting

Predicted band size: 23 kDa

Positive control: K562 and Hela cell lysates, Human left kidney tissue and fetal intestines tissue lysates

Recommended dilution: 500-2000

Gel: 12%SDS-PAGE

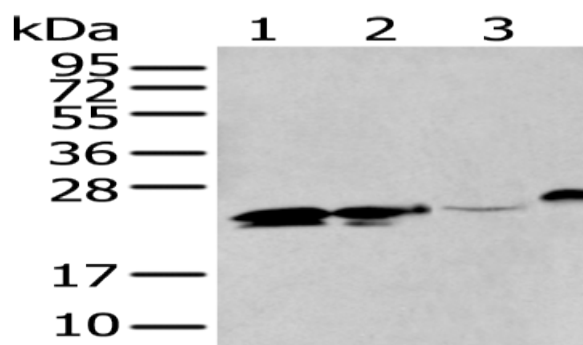
Lysate: 40 µg

Lane 1-4: K562 and Hela cell lysates, Human left kidney tissue and fetal intestines tissue lysates

Primary antibody: ml261480(BCAS4 Antibody) at dilution 1/400

Secondary antibody: Goat anti rabbit IgG at 1/8000 dilution

Exposure time: 10 seconds



ELISA

Recommended dilution: 5000-10000

联系电话: 4008-898-798, 021-61725725

联系QQ: 2881505695, 2881505696

邮箱: mlbio_cn@yeah.net

网址: www.mlbio.cn