

Anti-PHGDH antibody

Cat. No.	ml262044
Package	25 µl/100 µl/200 µl
Storage	-20°C, pH7.4 PBS, 0.05% NaN ₃ , 40% Glycerol

Product overview

Description	Anti-PHGDH rabbit polyclonal antibody
Applications	ELISA, WB
Immunogen	Synthetic peptide of human PHGDH
Reactivity	Human, Mouse, Rat
Content	0.3 mg/ml
Host species	Rabbit
Ig class	Immunogen-specific rabbit IgG
Purification	Antigen affinity purification

Target information

Symbol	PHGDH
Full name	phosphoglycerate dehydrogenase
Synonyms	PDG; PGD; PGAD; PGDH; SERA; 3PGDH; 3-PGDH; HEL-S-113
Swissprot	O43175

Target Background

This gene encodes the enzyme which is involved in the early steps of L-serine synthesis in animal cells. L-serine is required for D-serine and other amino acid synthesis. The enzyme requires NAD/NADH as a cofactor and forms homotetramers for activity. Mutations in this gene have been found in a family with congenital microcephaly, psychomotor retardation and other symptoms. Multiple alternatively spliced transcript variants have been found, however the full-length nature of most are not known.

订购热线: 4008-898-798

Applications

Western blotting

Predicted band size: 57 kDa

Positive control: 293T cells

Recommended dilution: 200-1000

Gel: 8% SDS-PAGE

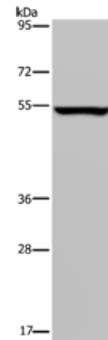
Lysate: 40 µg

Lane: 293T cells

Primary antibody: ml262044 (PHGDH Antibody) at dilution 1/200

Secondary antibody: Goat anti rabbit IgG at 1/8000 dilution

Exposure time: 1 minute



ELISA

Recommended dilution: 1000-2000

联系电话: 4008-898-798, 021-61725725

联系QQ: 2881505695, 2881505696

邮箱: mlbio_cn@yeah.net

网址: www.mlbio.cn